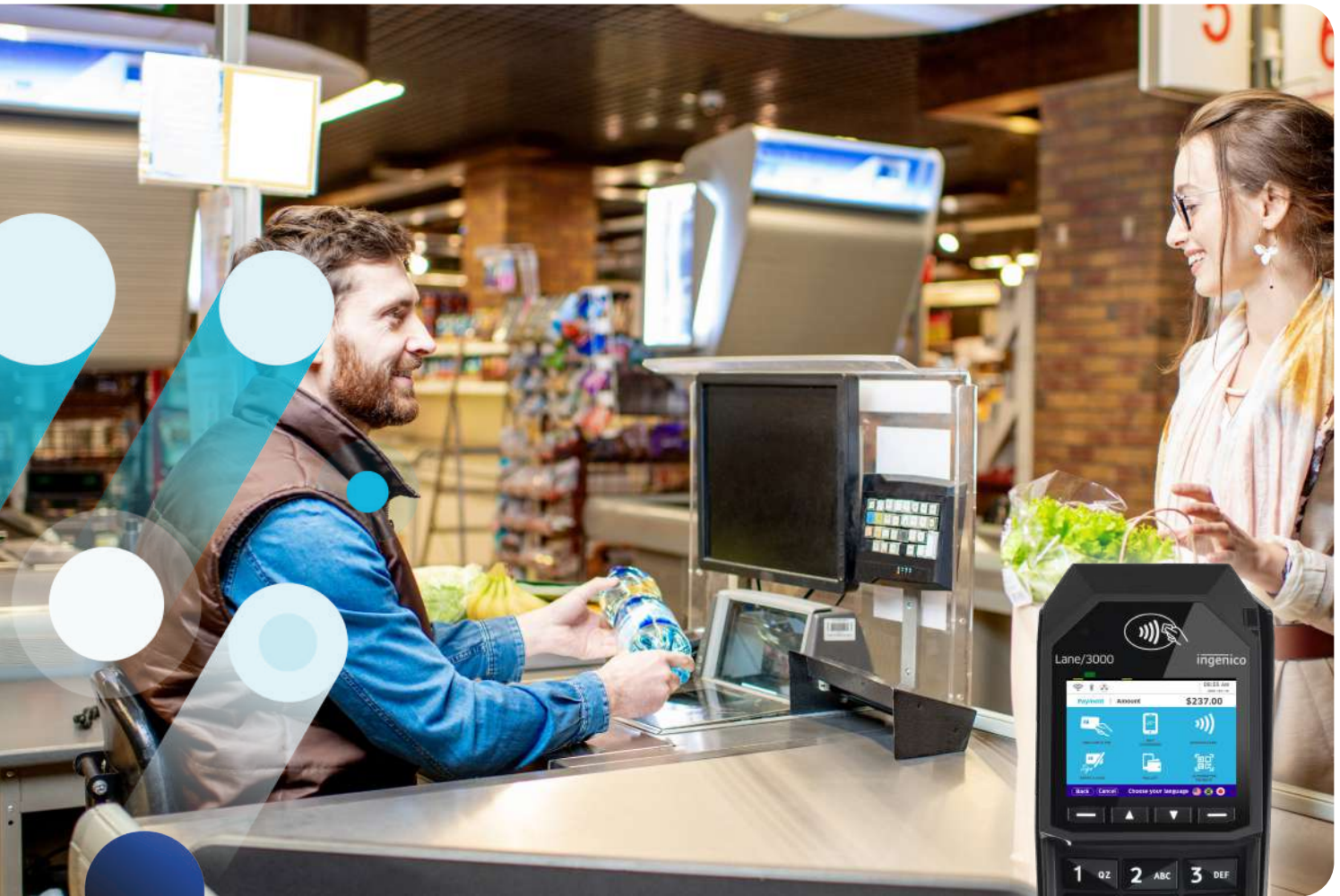


# Lane/3000

Designed for all payment types



- Robust design for even the most demanding situations
- High-end keypad for a seamless PIN entry
- Integrates easily into any environment
- Enhanced payment security with PCI PTS 5.x & 6.x certification

ingenico



Designed to manage thousands of transactions per day, the Lane/3000 is a cutting-edge retail PIN Pad, ideal for multiple use cases and environments including retail, hotels, and restaurants. Available in two forms, the retailer can choose between the Deluxe or the Basic version.



#### Flexible options for different business needs

This cutting-edge solution is available in two models: The Basic (Non-Modular) and the Deluxe (Modular). The Basic model focuses exclusively on processing EMV payments for multi-lane checkout use cases. The Deluxe model includes optional high-end features such as a camera, POE, Wi-Fi or Bluetooth. With these solutions, businesses can choose whether they want to focus on the core payment or offer more flexibility by promoting a range of other innovative payment and communication options.

#### Security you can count on

The Lane/3000 is certified and fully compliant with the latest global and local PCI Regulations (PCI PTS 5.x & 6.x). The Telium TETRA OS has been future-proofed with top-of-the-line cryptography software and Ingenico's world-class peer-to-peer encryption technology to keep data safe. Designed to be fixed to each lane, Lane/3000 is equipped with anti-theft systems, such as Kensington locks, to strengthen physical security.

#### Compatible with Ingenico's suite of services

#### Designed for retailers

Designed for retail usage, the Lane/3000 is featured with a heavy-duty magstripe and smartcard readers optimized to boost transaction speeds. Its very large dedicated contactless card reader zone speeds up checkout times for customers. With its compact and robust design, it integrates into any retail environment, including semi-unattended retail store kiosks.



Lane/3000 is supported by our Cloud Services

			MODULAR	NON-MODULAR
<b>Processor</b>	• Applications & Crypto Processor	• Cortex A5	✓	✓
<b>Memory</b>	• Internal • External	• 256 MB Flash, 128 MB RAM • Micro SD up to 32 GB	Optional	N/A
<b>OS</b>		• Telium TETRA HTML5	✓	✓
<b>SAM</b>			Up to 3	1
<b>Card Reader(s)</b>	• Magstripe • Smart Card • Contactless	• ISO1/2/3, 500K reads lifespan • EMV Level 1, 500K reads lifespan • EMV Level 1 3.0 spec compliant	✓ ✓ ✓	✓ ✓ ✓
<b>Camera</b>		• 2M pixels (QR code library embedded)	Optional	N/A
<b>Display (Non-Touch)</b>	• Color	• 2.8" backlight, QVGA (320x240 pixels)	✓	✓
<b>Keypad</b>		• 15 keys, raised markings, backlight • 4 function keys	✓ ✓	✓ ✓
<b>Audio</b>	• Buzzer • Audio Jack • Speaker	• Stereo • Mono	Optional Optional	N/A N/A

			MODULAR	NON-MODULAR
<b>Terminal Connectivity</b>	• Wired • Wireless	• Ethernet 10/100 base T • Wi-Fi and Bluetooth	Optional	N/A
<b>Terminal Connections</b>	• USB • Serial • Powered USB • Powered RS 232 • Powered Ethernet • External Power Supply	• USB Host • USB Slave • 1 RS232 • USB Retail • 12 V • POE Compliant with 802.3af (1)	✓ ✓ ✓ 12V Optional Optional	✓ ✓ ✓ 5V & 12V N/A Option
<b>Stand Mounting</b>		• Universal Payment Mount	✓	✓
<b>Terminal Size</b>		• 3.26" x 7.08" x 1.69" (83 x 180 x 43 mm)	✓	✓
<b>Weight</b>		• 8.89 oz (254 g)	✓	✓
<b>Environment</b>	• Operating temperature • Storage temperature • Relative humidity	• 32°F to 122°F (0 to +50°C) • -4°F to 131°F (-20 to +70°C) • 104°F (85% HR at +40°C)	✓ ✓ ✓	✓ ✓ ✓
<b>Accessories</b>	• Privacy shield (factory mounted)	• PCI compliant	✓	✓
<b>Security</b>	• PCI PTS • Anti-removal • Anti-theft	• PCI PTS 5.x & 6.x certified, rated for attended and self-service semi-attended use cases • Active connector removal • Kensington lock receptacles • Secure mounts available	✓ ✓ Optional	✓ ✓ Optional



www.ingenico.com

ingenico